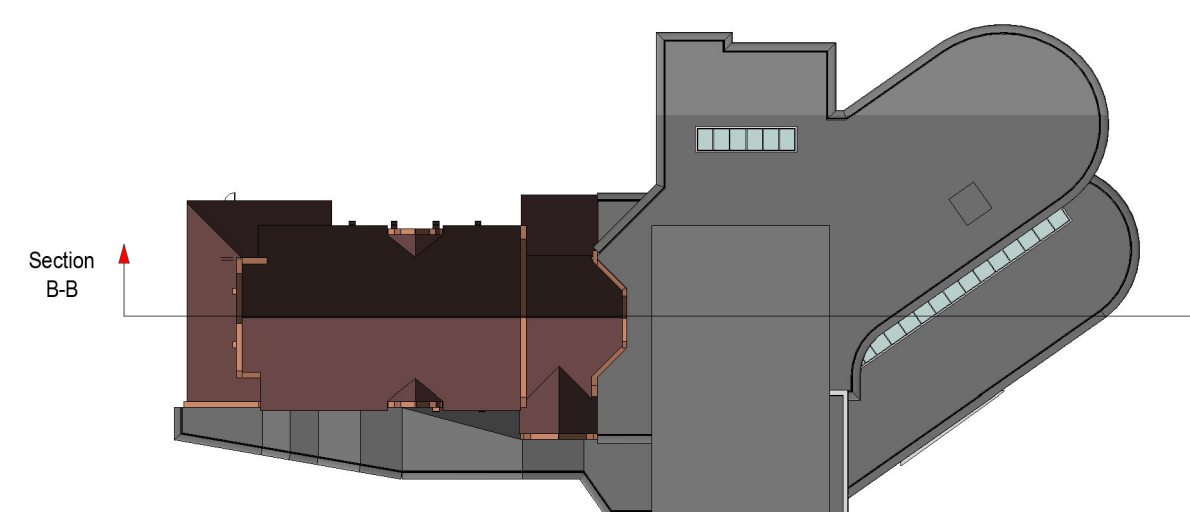


Key Plan



PROPOSED SITE SECTION B - B
Newbury Baptist Church - Redevelopment Proposals

June 2019
 5452 SK104

EDGINGTON
 SPINK + HYNE
 CHARTERED ARCHITECTS

meridian house | 2 russell street | windsor | berkshire | SL4 1HQ
 t: +44 (0)1753 857092
 w: <http://www.edgingtons.co.uk>